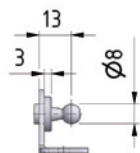
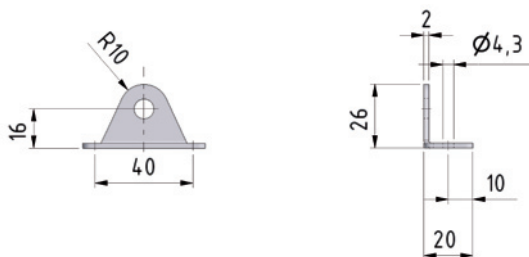
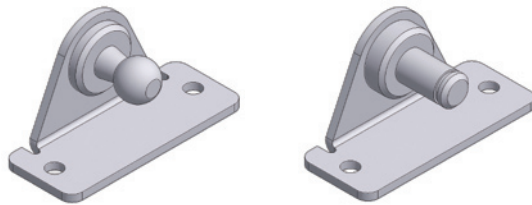


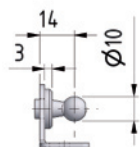
Winkelbeschlag

Material Stahl blau verzinkt
Optional Edelstahl W.1.4404/AISI 316 (V4)

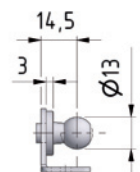
BA 30 / BA 30 V4



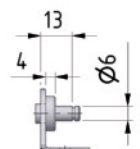
BA 30 K08
 BA 30 K08 V4
 Festigkeit max. 500 N



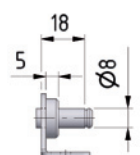
BA 30 K10
 BA 30 K10 V4
 Festigkeit max. 800 N



BA 30 K13
 BA 30 K13 V4
 Festigkeit max. 1200 N

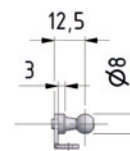
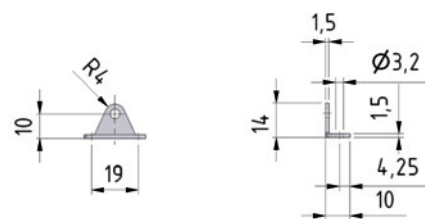


BA 30 Z06
 BA 30 Z06 V4
 Festigkeit max. 500 N

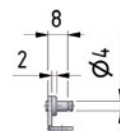


BA 30 Z08
 BA 30 Z08 V4
 Festigkeit max. 1200 N

BB 20 / BB 20 V4



BB 20 K08
 BB 20 K08 V4
 Festigkeit max. 180 N



BB 20 Z04
 BB 20 Z04 V4
 Festigkeit max. 180 N



BB 20 Z06
 BB 20 Z06 V4
 Festigkeit max. 180 N