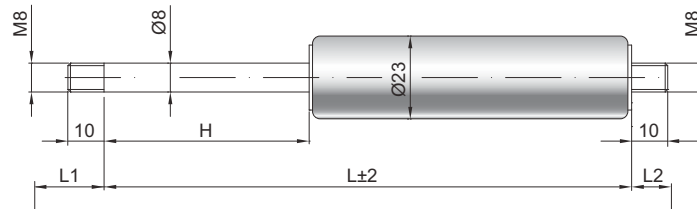


Gasdruckfeder G 08-23

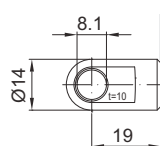
Ausschubkraft F1	50 - 700 Newton
Progression	18 %
Kolbenstange	Ø 8 mm, Stahl hartverchromt
Druckrohr	Ø 23 mm, Stahl schwarz lackiert
Anschlüsse	Stahl blau verzinkt

GZ 10



GZ 10

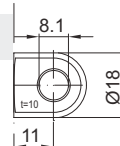
AU 19



Details

Standardhübe H (mm)

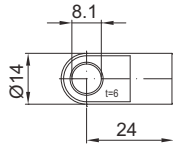
40, 50, 60, 70, 80, 100, 110, 120,
140, 150, 160, 180, 200, 220, 250,
300, 350, 400, 500



AB 11

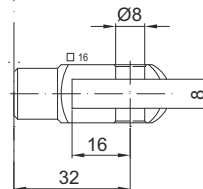
Nur am Zylinder möglich

AS 24



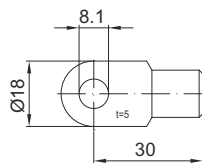
Standardlänge GL

$L = 2 \times H + 70$
 $GL = L + L1 + L2$



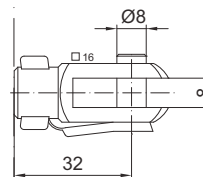
GA 32

AS 30



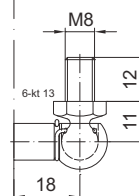
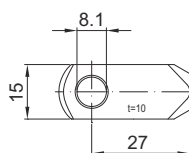
Extras

Abstreifer
Querventil
Fettkammer
Ventil
Schutzrohr
schwimmender Kolben
Einschubsicherung
Dichtsystem
Niedertemperaturlösung
Hochtemperaturlösung
Reibelement



GG 32

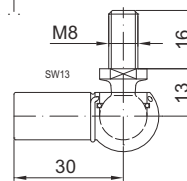
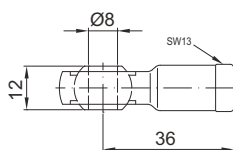
AR 27



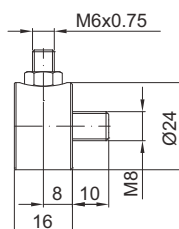
WG 18

bis max. 800 N

AG 36



WG 30



QV GZ

Gasdruckfeder G 10-23

Ausschubkraft F1	100 - 1200 Newton
Progression	30 %
Kolbenstange	Ø 10 mm, Stahl hartverchromt
Druckrohr	Ø 23 mm, Stahl schwarz lackiert
Anschlüsse	Stahl blau verzinkt

