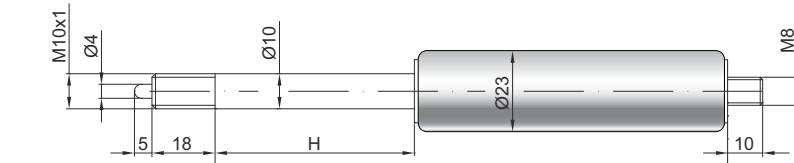


Federnd blockierbare Gasdruckfeder F 10-23

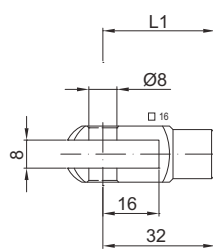
Ausschubkraft F1	150 - 1200 Newton
Progression	35 %
Kolbenstange	Ø 10 mm, Stahl hartverchromt
Druckrohr	Ø 23 mm, Stahl schwarz lackiert
Anschlüsse	Stahl blau verzinkt

GZ 18



GZ 10

GX 32



Details

Standardhöhe H (mm)

20, 25, 30, 35, 40, 50, 60, 65, 70, 80,
90, 100, 110, 120, 130, 135, 140, 150,
160, 165, 180, 200, 210, 220, 230, 250,
300, 350, 400, 450, 500

Standardlänge GL

$L = 2 \times H + 90$
 $GL = L + L1 + L2$

Auslösung Standard

Auslösestift 5 mm überstehend
Auslöseweg 2 - 4 mm

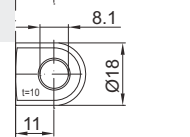
Auslösung Optional 0,1 mm

Auslösestift 3 mm überstehend
Auslöseweg 0,1 - 0,2 mm

Technische Vorschrift beachten

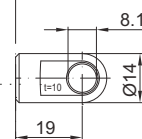
Extras

Kolbenstangenabdichtung
Fettkammer
Ventil
Schutzrohr
kurze Auslösung

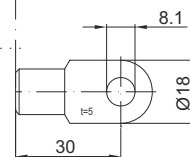


AB 11

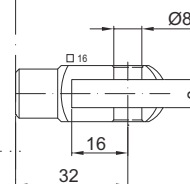
Nur am Zylinder möglich



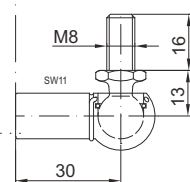
AU 19



AS 30



GA 32



WG 30