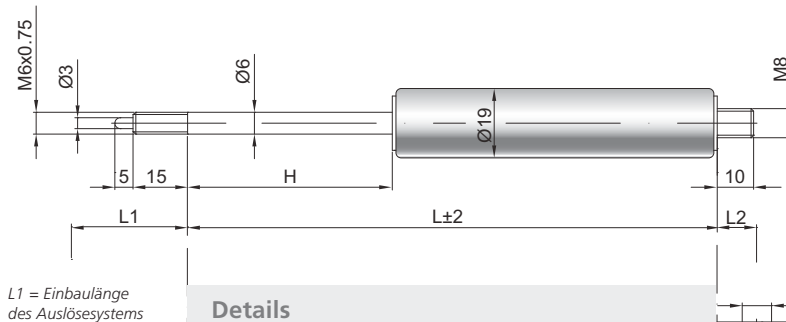


## Federnd blockierbare Gasdruckfeder F 06-19

<b>Ausschubkraft F1</b>	60 - 400 Newton
<b>Progression</b>	20 %
<b>Kolbenstange</b>	Ø 6 mm, Stahl hartverchromt
<b>Druckrohr</b>	Ø 19 mm, Stahl schwarz lackiert
<b>Anschlüsse</b>	Stahl blau verzinkt

GZ 15



L1 = Einbaulänge  
des Auslösesystems

### Details

#### Standardhöhe H (mm)

20, 30, 40, 50, 60, 80, 90, 100, 120, 150

#### Standardlänge GL

$$L = 2,4 \times H + 70$$

$$GL = L + L1 + L2$$

#### Auslösung

Auslösestift 5 mm überstehend

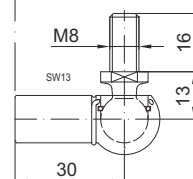
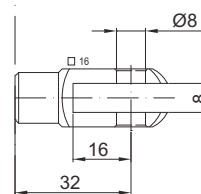
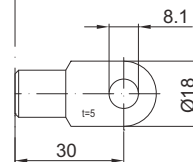
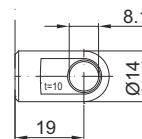
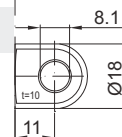
Auslöseweg 2 - 4 mm

**Technische Vorschrift** beachten

#### Extras

Fettkammer

Ventil



GZ 10

AB 11

Nur am Zylinder möglich

AU 19

AS 30

GA 32

WG 30