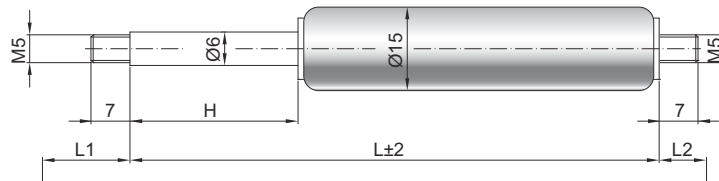


Gasdruckfeder G 06-15

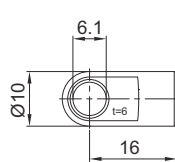
Ausschubkraft F1	40 - 400 Newton
Progression	22 %
Kolbenstange	Ø 6 mm, Stahl hartverchromt
Druckrohr	Ø 15,6 mm, Stahl schwarz lackiert
Anschlüsse	Stahl blau verzinkt

GZ 07



GZ 07

AU 16



Details

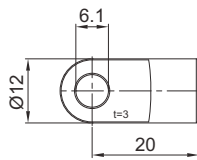
Standardhübe H (mm)

20, 30, 40, 50, 60, 70, 80, 100, 110,
120, 140, 150, 160, 170, 180, 190, 200,
220, 250, 300

AB 09

Nur am Zylinder möglich

AS 20

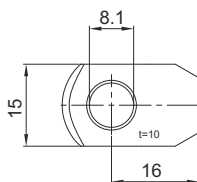


Standardlänge GL

$L = 2 \times H + 55$
 $GL = L + L1 + L2$

PF 22

AR 16

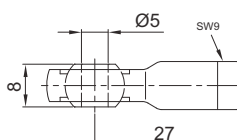


Extras

4 - Fettkammer
5 - Ventil
6 - Schutzrohr
7 - schwimmender Kolben
B3 - Dichtsystem
NT - Niedertemperaturlösung
HT - Hochtemperaturlösung
RK - Reibelement

WG 22

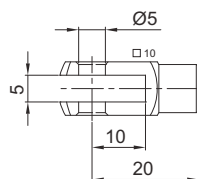
AG 27



Weitere **Anschlüsse** finden Sie hier ▶

Passende **Beschläge** finden Sie hier ▶

GA 20



WX 22

