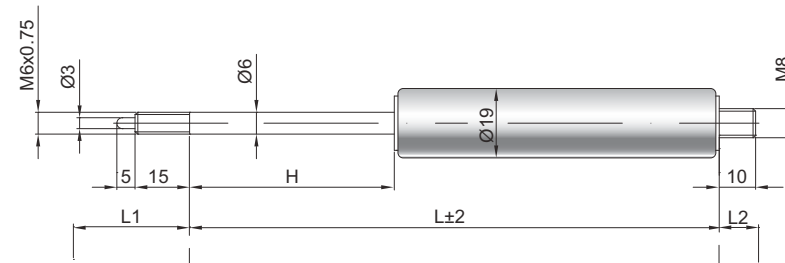


## Spring-loaded lockable gas springs F 06-19

<b>Extension force F1</b>	60 - 400 Newton
<b>Progression</b>	20 %
<b>Piston rod</b>	Ø 6 mm, hard chrome-plated steel
<b>Pressure pipe</b>	Ø 19 mm, black lacquered steel
<b>Connections</b>	Steel blue galvanised

GZ 15



GZ 10

L1 = Installation length  
of the release system

### Details

#### Standard strokes H (mm)

20, 30, 40, 50, 60, 80, 90, 100, 120, 150

#### Default length GL

$L = 2,4 \times H + 70 \text{ GL}$   
 $= L + L1 + L2$

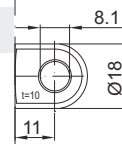
#### Release

Release pin protrudes 5 mm  
Release travel 2 - 4 mm

Observe **technical regulation**

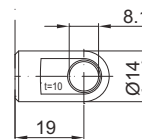
#### Extras

Fat chamber  
Valve

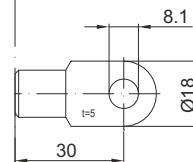


AB 11

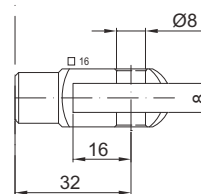
Only possible on the cylinder



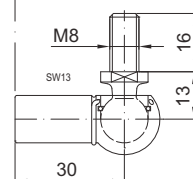
AU 19



AS 30



GA 32



WG 30