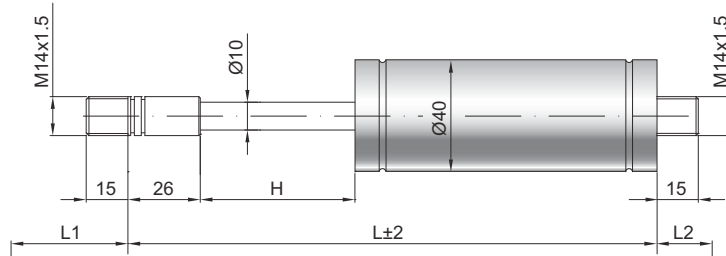


## Gas pull spring Z 10-40

<b>Tractive force F1</b>	200 - 2000 Newton
<b>Progression</b>	40 %
<b>Piston rod</b>	Ø 10 mm, hard chrome-plated steel
<b>Pressure pipe</b>	Ø 40 mm, black lacquered steel
<b>Connections</b>	Blue galvanised steel

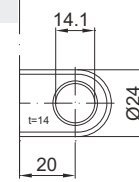
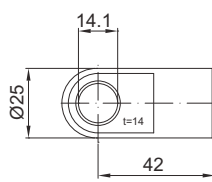
GZ 15

GZ 15



AU 42

AZ 20



### Details

#### Standard strokes H (mm)

10, 40, 50, 60, 70, 90, 100, 110, 120,  
140, 150, 170, 190, 200, 210, 240, 250,  
290, 340, 350, 390, 440, 490, 590

#### Default length GL

$$L = 2 \times H + 150 \text{ GL}$$

$$= L + L1 + L2$$

#### Standard scope of delivery

Valve on the piston rod

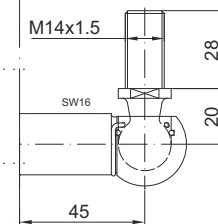
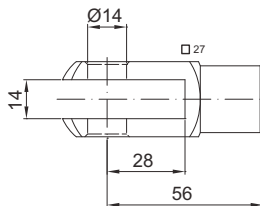
#### Extras

- Fat chamber
- Protection tube
- Sealing system
- Low temperature version
- High temperature version

*Only possible on the cylinder*

GA 56

WG 45



AG 57

