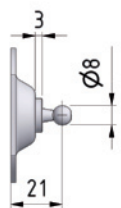
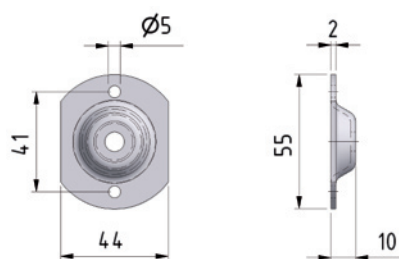
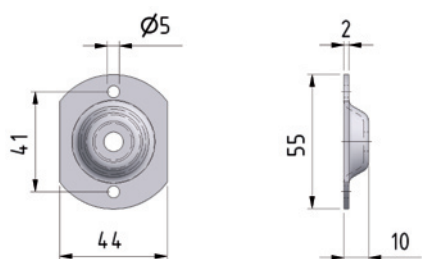


# Round fitting

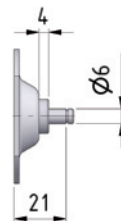
**Material** Blue galvanised steel

**Optional** Stainless steel W.1.4404 / AISI 316 (V4)

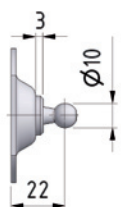
## BA 20 / BA 20 V4



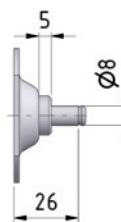
BA 20 K08  
BA 20 K08 V4  
Strength max. 500 N



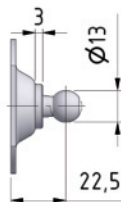
BA 20 Z06  
BA 20 Z06 V4  
Strength max. 500 N



BA 20 K10  
BA 20 K10 V4  
Strength max. 800 N



BA 20 Z08  
BA 20 Z08 V4  
Strength max. 1200 N



BA 20 K13  
BA 20 K13 V4  
Strength max. 1200 N