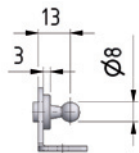
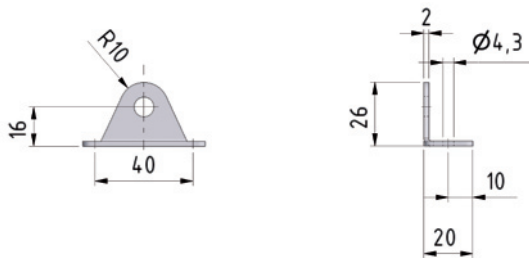
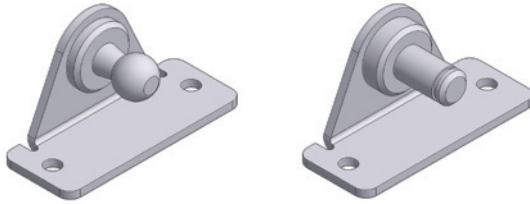


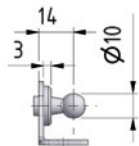
# Angle fitting

**Material** Blue galvanised steel  
**Optional** Stainless steel W.1.4404 / AISI 316 (V4)

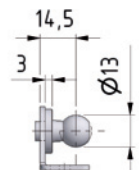
## BA 30 / BA 30 V4



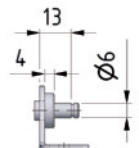
BA 30 K08  
 BA 30 K08 V4  
 Strength max. 500 N



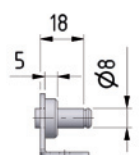
BA 30 K10  
 BA 30 K10 V4  
 Strength max. 800 N



BA 30 K13  
 BA 30 K13 V4  
 Strength max. 1200 N

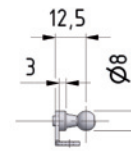
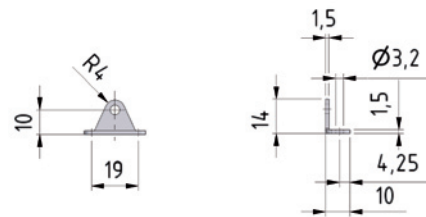


BA 30 Z06  
 BA 30 Z06 V4  
 Strength max. 500 N

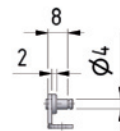


BA 30 Z08  
 BA 30 Z08 V4  
 Strength max. 1200 N

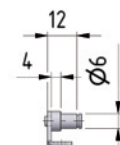
## BB 20 / BB 20 V4



BB 20 K08  
 BB 20 K08 V4  
 Strength max. 180 N



BB 20 Z04  
 BB 20 Z04 V4  
 Strength max. 180 N



BB 20 Z06  
 BB 20 Z06 V4  
 Strength max. 180 N